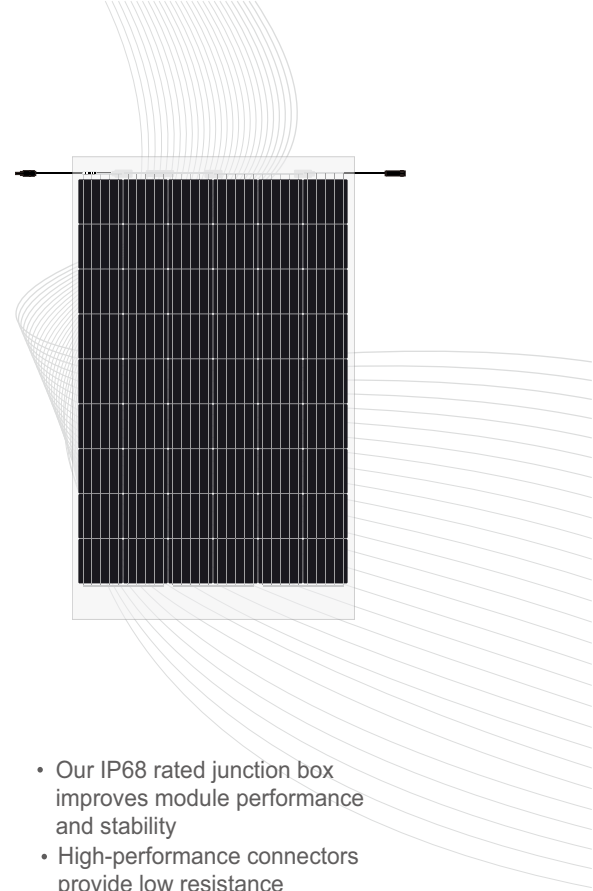


PERC MONO CRYSTALLINE BIFACIAL TRANSPARENT MODULE

DMG295B6A-54XT

280 / 285 / 290 / 295



Technology

High module conversion efficiency through superior manufacturing technology



Voltage resistance

Module can withstand the 1500V system voltage



PID Free

Excellent PID resistance according to IEC TS 62804-1



Performance

High performance under low light conditions (Cloudy days, mornings and evenings)



Quality

Manufactured according to International Quality and Environmental Management Systems (ISO9001, ISO14001)



Value

Our vertically integrated business model allows for competitive pricing and great value

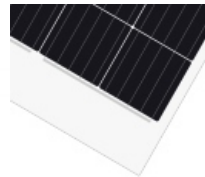
www.dmegcsolar.com

Power Output



- Our IP68 rated junction box improves module performance and stability
- High-performance connectors provide low resistance interconnection to ensure the full utilization of module output power

Visible Quality



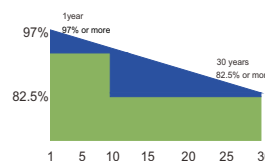
- Durable, high-quality
- Rigid construction: 2400Pa & 2400Pa rated assembly

Superior Manufacturing-Quality Assurance



- All modules are manufactured using TQC & SPC quality control systems
- Advanced cell sorting to avoid electric mismatch
- 100% EL Test-before lamination & prior to shipment
- Comprehensive Safety and Reliability tests are performed

Warranty



- 12 Years Manufacturers Warranty
- Linear Power Output Warranty, no less than 82.5% at year 30th



Electrical Specifications

* STC irradiance of 1000W/m² spectrum AM 1.5 and cell temperature of 25°C

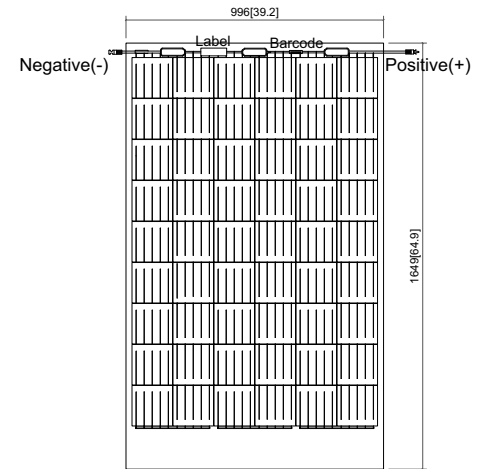
Module Type	DMG280B6A-54XT	DMG285B6A-54XT	DMG290B6A-54XT	DMG295B6A-54XT
Output Tolerance			0/+3%	
Bifaciality Factor			70%±5%	
Maximum Rating Power(Pm)	280W	285W	290W	295W
Module Efficiency	17.05%	17.35%	17.66%	17.96%
Open Circuit Voltage(Voc)	35.56V	35.76V	35.96V	36.16V
Maximum Power Voltage(Vmp)	29.77V	29.97V	30.17V	30.37V
Short Circuit Current(Isc)	9.82A	9.92A	10.02A	10.11A
Maximum Power Current(Imp)	9.42A	9.52A	9.62A	9.72A

Bifacial Gain

Gain	Pm	DMG280B6A-54XT	DMG285B6A-54XT	DMG290B6A-54XT	DMG295B6A-54XT
10%	Pm	308W	313.5W	319W	324.5W
20%	Pm	336W	342W	348W	354W
30%	Pm	364W	370.5W	377W	383.5W

Mechanical Data

Cell Type	DMBD5B159-223
Cell Arrangement	54(6x9)
Module Structure	Glass/ POE / Glass
Glass Thickness	1.6mm / 1.6mm (front/back)
Application Class	Class A at IEC 61730
Junction Box Rating	IP 68
Cables(Positive/Negative)	220mm / 100mm / 4mm ²
Connector Type	MC4 / MC4 Compatible
Fire Rating Class	Class A



(Back side)
Note:mm[inch]

Maximum Ratings

Operating Temperature	-40°C to +85°C
Maximum Load Capacity	Snow 2400Pa / Wind 2400Pa
Maximum System Voltage	1000V / 1500V DC(IEC)
Maximum Series Fuse Rating	20A
Number of Diodes	3

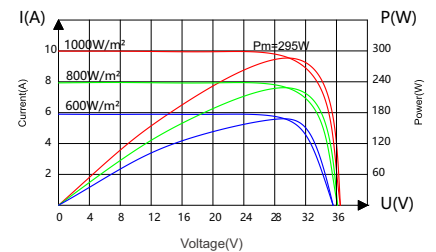
Packaging

Module Dimensions	1649x996x4.2mm
Weight	15.7kg
Pallet Dimensions	1775x1140x1170mm
Container	40' HQ
Pieces per Pallet	33
Pallets per Container	26
Pieces per Container	858
Gross Weight per Pallet	600kg
Gross Weight per Container	15600kg

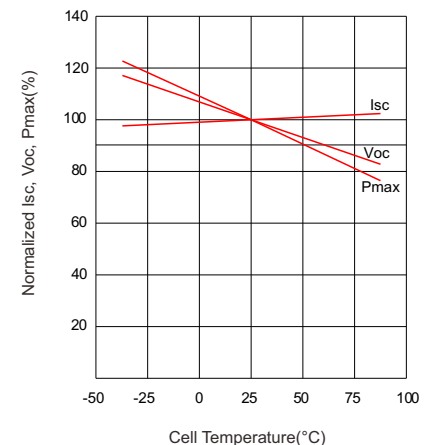
Temperature Characteristics

Nominal Module Operating Temperature (NMOT)	42°C±3°C
Temperature Coefficient of Isc	+0.038%/°C
Temperature Coefficient of Voc	-0.270%/°C
Temperature Coefficient of Pmax	-0.365%/°C

Current-Voltage&Power-Voltage Curve(295W)



Temperature Dependence of Isc, Voc, Pmax(°C)



Hengdian Group DMEGC Magnetics Co., Ltd.
Hengdian Industrial Zone, Dongyang City
Zhejiang Province, China 322118

Tel: 0086-579-8658-8825 Fax: 0086-579-8655-4845
Email: solar@dmegc.com.cn
www.chinadmegc.com www.dmegcsolar.com