

# M8 IBC BIPV

## Belinus Ultra Black Wall

**belinus** BELGIAN DESIGN AND QUALITY 



### Bifacial IBC Technology

Cutting edge IBC Technology for ultra high efficiency

90% Bifaciality for up to 10% additional power



### N-Type Technology

Zero PID and LID



### Zero Busbar Technology

Elegant looks and status



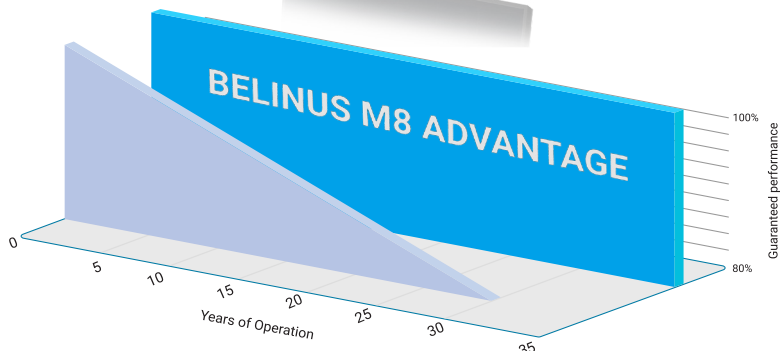
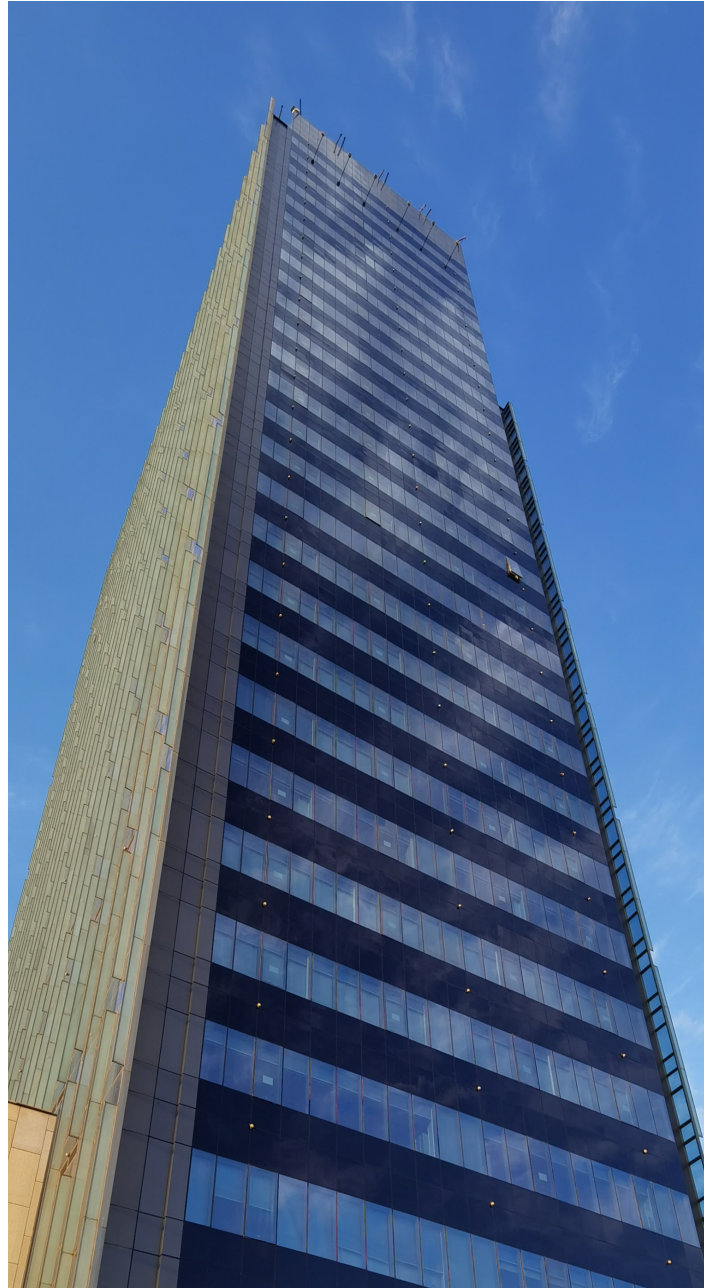
### Very Low Temperature Coefficient

VOC:  $-0.244\% / ^\circ\text{C}$ , much lower than PERC or N-TopCon modules



### European Quality

Made of European components, including Staubli MC4 connectors



**EASY TO INSTALL**

**Fire Safety Class A**

**IEC61730**

**UL1703**

**TUV Certified**

**365 W**

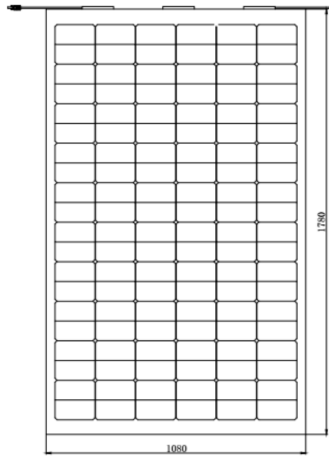
**190 W/m<sup>2</sup>**

**LLOYD'S**

Underwriters



## Technical Characteristics



## Temperature Characteristics

Nominal Operating Cell Temp. (NOCT)	44°C (±2°C)
Temperature Coefficient of Pmax	-0.288 %/°C
Temperature Coefficient of Voc	-0.244 %/°C
Temperature Coefficient of Isc	+0.044 %/°C

## Packaging Information

Container	40'HC
Pieces per pallet	24
Pallets per container	16
Pieces per container	384



## Qualifications and certificates



## Mechanical Characteristics

Laminate Structure	Glass/ POE/ Cells/ POE/ Glass
Cell Type	N - Type IBC 166 x 83 mm
Cell Connection	120 (6x20)
Module Dimensions	1780 x 1080 x 13.5 mm
Weight	23.5kg
Junction Box	Degree of protection IP68
Output Cable	4mm <sup>2</sup> , 300mm with MC4
Connectors Type	Stäubli MC4
Frame	Anodised Aluminum Alloy
Encapsulant	POE
Front Load	5400 Pa
Real Load	2400 Pa
Glass Thickness	6.0mm fire resistant glass x 2

## Electrical Characteristics

Maximum Power (Pmax)	365W (10% back gain)	402W
Max Module Efficiency(%)	19.0%	21.0%
Voltage at Max Power (Vmp)	71V	
Current at Max Power (Imp)	5.1A	
Open Circuit Voltage (Voc)	83.7V	
Short Circuit Voltage (Isc)	5.3A	
Operating Module Temperature	-40 to +85°C	
Maximum System Voltage	DC1500V	
Maximum Series Fuse	15A	
Rating Power Sorting	0~+5W	

\*STC: Irradiance 1000 W/m<sup>2</sup>, module temperature 25°C, AM=1.5; Best in Class AAA solar simulator used, power measurement uncertainty is within +/- 3%.

## Belinus Ultra Black N-Night IBC All-In-One Warranty

## Conventional Solar Panel Warranty

Service Warranty	35 years	
Shipping - new part		
Shipping - old part		
Installation		
Product Warranty	35 years	10 years
Power Warranty		
Start point	100%	97%
Yearly decline	0%	0.7%
End point (25 years)	100%	80%
End point (35 years)	100%	

Certificates available upon special requests. Additional charges may apply.

Both the Belinus solar cells and solar modules are made by suppliers in the Bloomberg Tier 1 List.

BE-DSH2022 V1

All rights reserved. Subject to change. Errors excepted.